



BY APPOINTMENT TO HER MAJESTY THE QUEEN  
SUPPLIERS OF WALLPAPER, COLE & SON (WALLPAPERS) LTD, LONDON

# Cole & Son®

COLOUR · PATTERN · EXCEPTIONAL WALLPAPERS

# FORNASETTI

• senza tempo II •

COLLECTION GUIDE

FORNASETTI  
SENZA TEMPO II

SOLI

SOLI E  
NUVOLE

VISTA  
MEDITERRANEA

TECHNICAL  
SPECIFICATION

CAMMEI

CONCHIGLIE

FRUTTA E  
GEOMETRICO

GEOMETRICO

RAMO DI  
ORTENSIA

ORTENSIA

FOGLIE E  
SCIMMIE

FOGLIE E  
CIVITTE

PAGINATION  
SHEET

CONTACT US



# Cole & Son®

COLOUR · PATTERN · EXCEPTIONAL WALLPAPERS

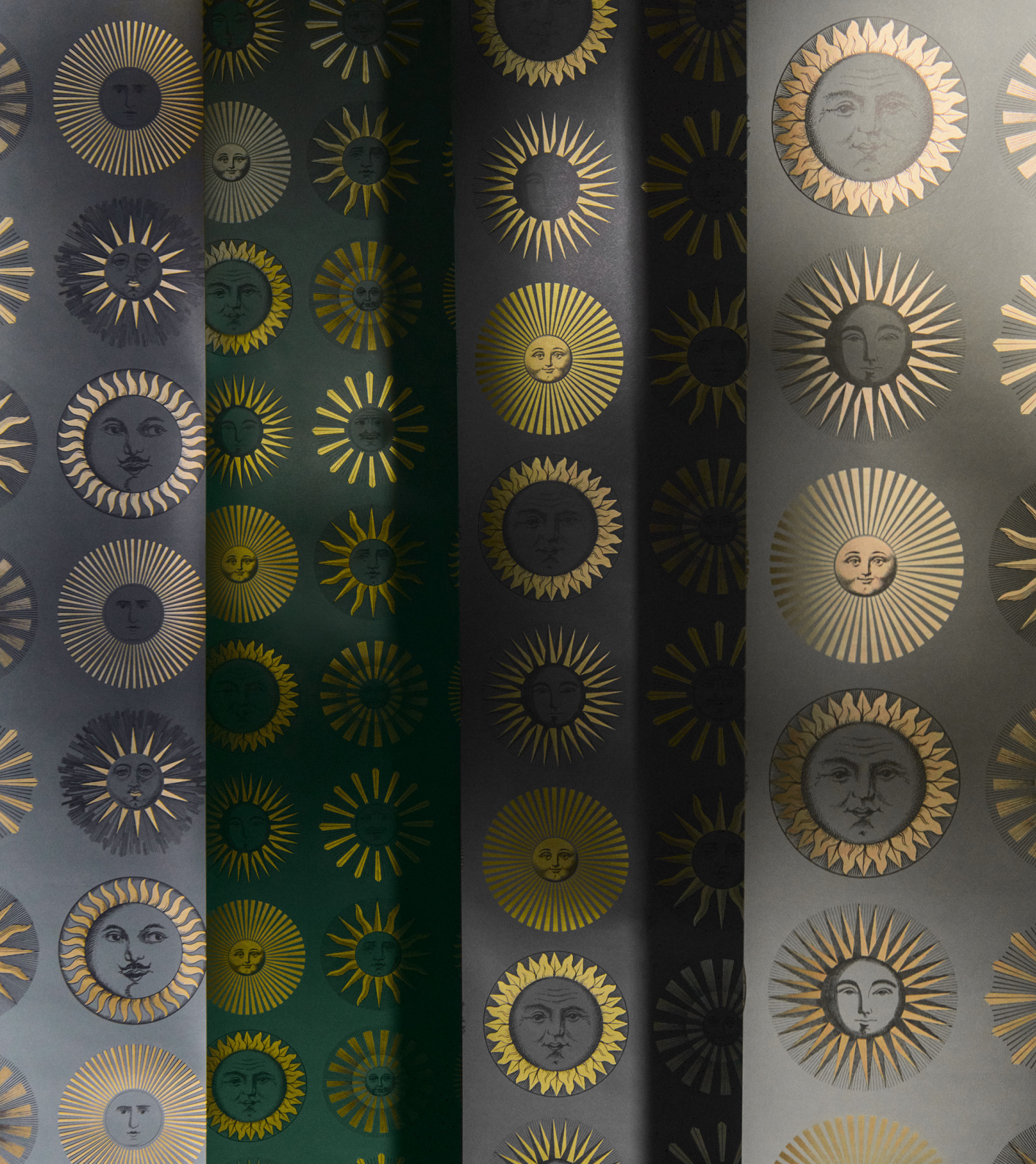
Innovative, intelligent, artistic design is founded upon a strong heritage of craftsmanship. The Design House of Cole & Son has been creating original and exceptional wallcoverings since 1875 in London, an area renowned for its artisanal production and hand block printing.

Today, the Cole & Son archive is a beautiful and inspiring chronicle of artistic styles and expressions spanning the 18th Century to modern day. Consisting of approximately 2,000 block print designs, 500 screen print patterns and a vast quantity of original drawings and wallpapers. The archive and log of commissions attest to some of the most important decorating schemes of the 19th and 20th Centuries; from stately homes such as Chatsworth House, Blickling Hall and Audley End to Buckingham Palace, Kensington Palace, Windsor Castle and the wallpaper designs of A.W. Pugin featured in the Palace of Westminster – a collection which is still faithfully maintained today.

On occasion, this extensive archive is a source of inspiration for new designs within collections. Elements from historic prints and patterns are carefully selected, adapted and coloured by the Cole & Son Design House artists and printed by craftsmen to produce wallpapers faithful to the character of the original document, yet contemporary in feel.

With a commitment and passion for design excellence, the Design House of Cole & Son is dedicated to creating beautifully detailed wallcoverings and fabrics; combining colour and pattern to create unique, distinctive and inviting interiors.





# FORNASETTI

Fornasetti is the Italian atelier that is internationally recognised for the design and decoration of pieces of furniture and home accessories.

In this place where art meets design, timeless creations come to life, ready to inspire the imagination. The decorations play with shapes and turn everyday objects into multiples of art.

The world of Fornasetti floats between imagination and reality, enriched by cultural references and artistic allusions. This is why a Fornasetti object is not simply something to possess, it is something to live and be inspired by.

The Atelier was founded in Milan in the 1940s by Piero Fornasetti, a versatile and eclectic artist distinguished by an unstoppable creative flair that made him one of the most prolific figures of twentieth century Italy. Barnaba Fornasetti, Artistic Director and guardian of his father Piero's legacy, has kept the dream unchanged over the last thirty years.

In the Fornasetti Atelier in Milan every object is still created using the original techniques of expert Italian craftsmanship. Hands at the service of ideas, respecting the protracted times of artistic crafts and the secrets of savoir-faire: it all comes together to make Fornasetti creations unique. In this place inspirations, sketches and dreams take on physical form and are elevated to become art objects.





Cole & Son®

COLOUR · PATTERN · EXCEPTIONAL WALLPAPERS

FORNASETTI

• senza tempo II •

British hand-crafted artistry meets Italian wit and imagination in the latest volume of the enduring partnership between the design house of Cole & Son and Fornasetti, the iconic Milanese Atelier.

The collector's curiosities are again transformed into distinguished wallcoverings. Fruits of nature in all their glorious forms take a flight of fancy into interior decor. Studies of nature from selections of shells to lush foliage, curious creatures, and the sky come together making the everyday spectacular.

Artisans from both houses create a unique magic with endless creativity and a truly timeless aesthetic; every design is effortlessly *Senza Tempo*.

FORNASETTI  
SENZA TEMPO II

SOLI

SOLI E  
NUVOLE

VISTA  
MEDITERRANEA

TECHNICAL  
SPECIFICATION

CAMMEI

CONCHIGLIE

FRUTTA E  
GEOMETRICO

GEOMETRICO

RAMO DI  
ORTENSIA

ORTENSIA

FOGLIE E  
SCIMMIE

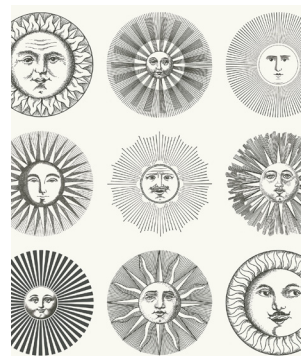
FOGLIE E  
CIVITTE

PAGINATION  
SHEET

CONTACT US



# SOLI



SOLI 123/1001  
Black & White



SOLI 123/1002  
Cream & Gold



SOLI 123/1003  
Sage & Rose Gold



SOLI 123/1004  
Midnight & Soft Gold



SOLI 123/1005  
Emerald & Gold

## SOLI

A classic of the Atelier's portfolio, the sun occupies a privileged position in the Fornasetti repertoire of natural forms and is one of the major motifs in the Atelier's visual universe. A predilection in part justified by the fact that for years in the early 1940s, at the request of Gio Ponti, Piero Fornasetti designed almanacs on a lunar theme to be given as Christmas gifts.

There are several variations of this star within the Fornasetti universe, from fabrics to porcelain, accessories, and pieces of furniture.

Presented as a striking repeat of shining faces, *Soli's* colour palettes range from a strikingly simple monochrome to a rich emerald green with radiant golden suns.



# SOLI E NUVOLE



SOLI E NUVOLE 123/2006  
Yellow & Blue



SOLI E NUVOLE 123/2007  
Black & White



SOLI E NUVOLE 123/2008  
Gold & Silver on Charcoal



SOLI E NUVOLE 123/2009  
Beige & Soft Gold



SOLI E NUVOLE 123/2010  
Teal & Rose Gold



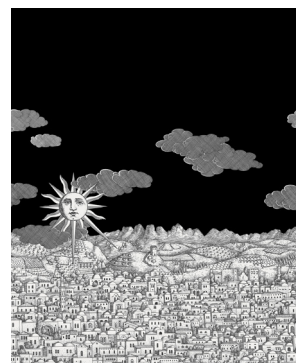
SOLI E NUVOLE 123/2011  
Gold on Gold

## SOLI E NUVOLE

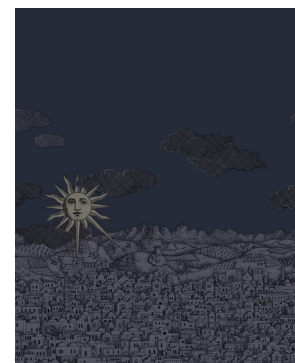
The inspiration of this print is 'Sole di Capri' a design created by Piero Fornasetti in the 50s. Piero Fornasetti long had a passion for Capri and created this iconic design from his imagination, before ever having visited the legendary island. Piero eventually took the family there on holiday and, during the 1960s, also opened a temporary Fornasetti boutique on the island. The original print is a combination of personified suns and stylized architecture, both typical of Fornasetti. The idea of pairing personified suns and clouds appears for the first time in a sketch for a headscarf that Piero drew in 1950. It is now a whimsical all-over print, bringing a unique quirk to an interior.



# VISTA MEDITERRANEA



VISTA MEDITERRANEA 123/3012  
Charcoal Sky



VISTA MEDITERRANEA 123/3013  
Midnight with Silver Sun



VISTA MEDITERRANEA 123/3014  
Blue Ombre Sky



VISTA MEDITERRANEA 123/3015  
Soft Neutral

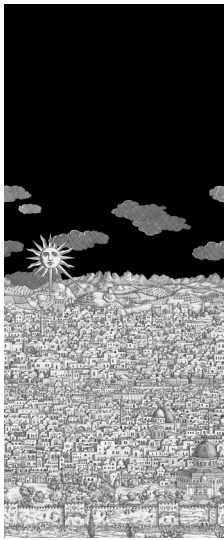
## VISTA MEDITERRANEA

A flight beyond the limits of the imagination lead Fornasetti to an enchanted, hypnotic Jerusalem. Multiple points of view overlap, with different architectural styles chasing each other in a continuous pattern. The precise black line of the buildings interprets a boundless imagination, creating an intriguing texture. The first dreamlike journey of this design took place on the 'Gerusalemme' wallpaper designed by Piero Fornasetti for the entrance hall of his Milan residence at the end of the 1940s. It was then later extended to trays, magazine racks, lamps, and pieces of furniture. A shining sun, peeking through the clouds, was added to the landscape in the early 90s, adding another fanciful element to this sprawling print.

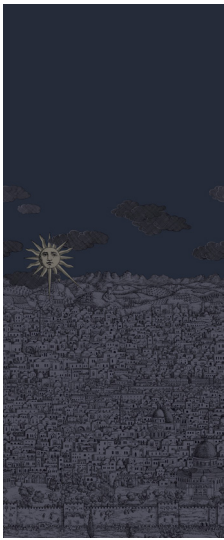
A bright cerulean sky gives way to a deep tanzanite as the scene is taken from day to night, with the introduction of a lustred mica for this midnight palette bringing the most subtle details to the fore.



TECHNICAL SPECIFICATION



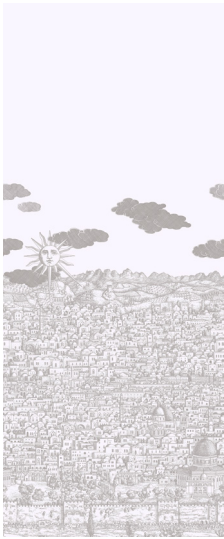
VISTA MEDITERRANEA  
123/3012  
Charcoal Sky



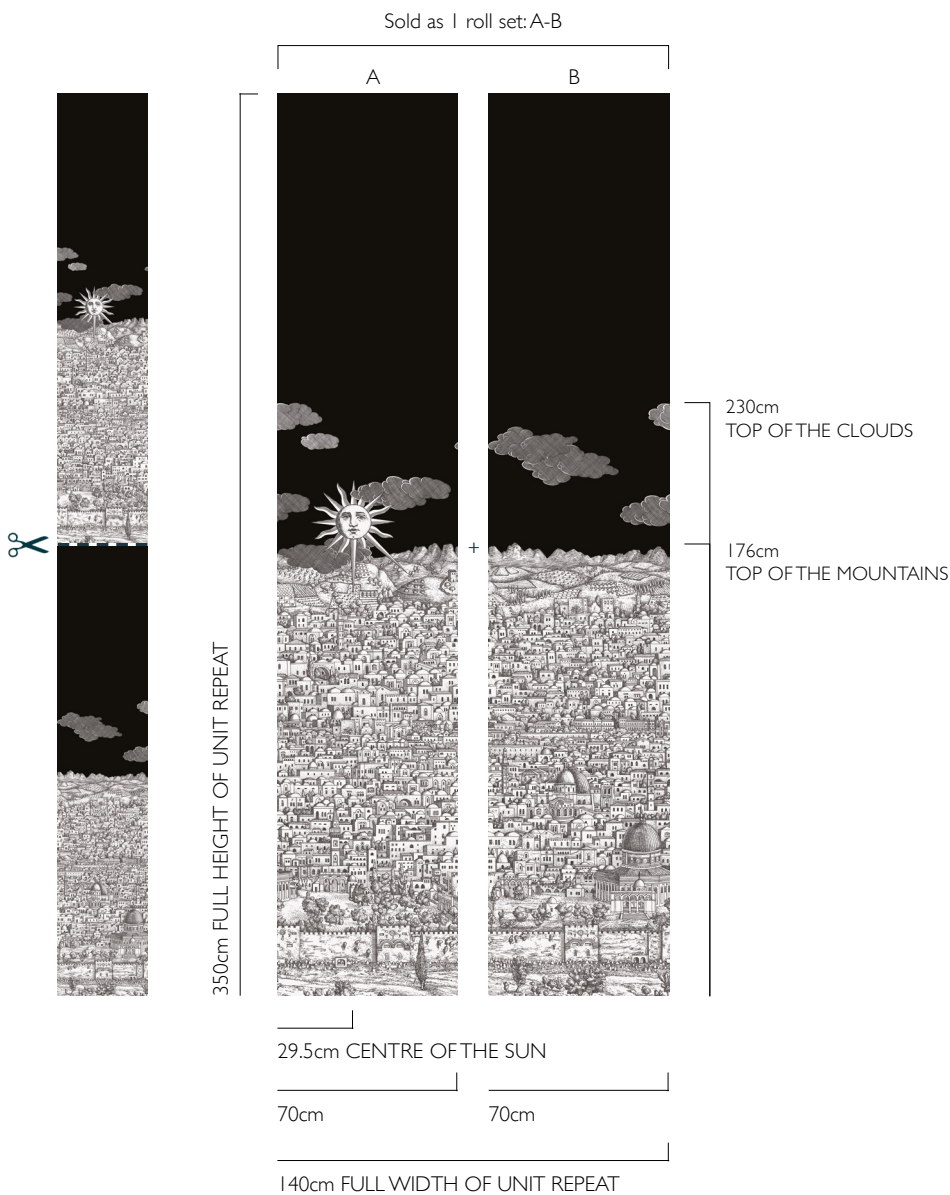
VISTA MEDITERRANEA  
123/3013  
Midnight with Silver Sun



VISTA MEDITERRANEA  
123/3014  
Blue Ombre Sky



VISTA MEDITERRANEA  
123/3015  
Soft Neutral



We recommend trimming from the top to fit any interior  
to ensure no buildings are cut off



# CAMMEI



CAMMEI 123/4016  
Antique Gold on Olive



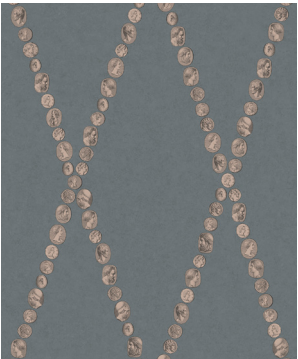
CAMMEI 123/4017  
Silver on Ink



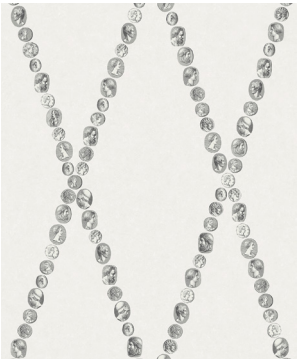
CAMMEI 123/4018  
Gold on Charcoal



CAMMEI 123/4019  
Soft Gold on Stone



CAMMEI 123/4020  
Slate & Rose Gold



CAMMEI 123/4021  
Black & White

## CAMMEI

Piero Fornasetti was the consummate collector with a plethora of cameos certainly forming part of his vast collection of curiosities. The *Cammei* theme is dear to Fornasetti and is an homage to Classicism.

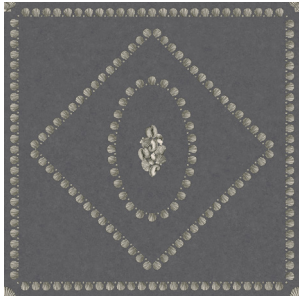
This elegant design has been used on a multitude of Fornasetti pieces: from teacups and other ceramic pieces to trays and screens. It has also proved very successful on tabletops, so much so that Fornasetti has produced several variations and colour combinations over the years. Evoking a visual universe that mixes various eras, this wallpaper illuminates a room with an eternal beauty.



# CONCHIGLIE



CONCHIGLIE 123/5022  
Gilver on Denim



CONCHIGLIE 123/5023  
Soft Gold on Charcoal



CONCHIGLIE 123/5024  
Pearl on Parchment



CONCHIGLIE 123/5025  
Gold on Stone



CONCHIGLIE 123/5026  
Antique Gold on Ivy

## CONCHIGLIE

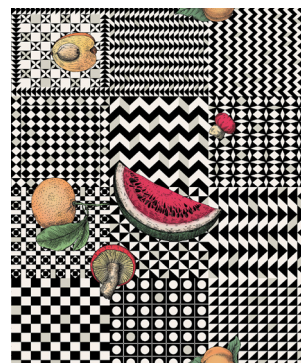
Fornasetti used shells to cover the walls of his Lake Como villa dining room, as a mid-century interpretation of a sixteenth-century grotto. The room also featured a delicate shell ceiling lamp made by Giulia, Piero's wife.

This motif can be seen across many of the atelier's pieces from headscarves and vases to trays, mirrors, and tables; Fornasetti inspiration knows no creative bounds.

Forming a geometric repeat of shell-laden boxes and diamonds, *Conchiglie* is full of exquisite detail, providing new inspiration every time the design is viewed.



# FRUTTA E GEOMETRICO



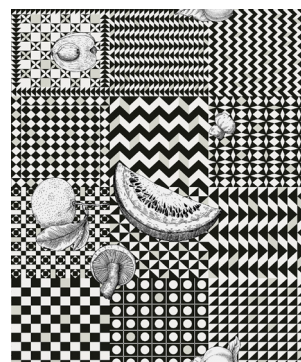
FRUTTA E GEOMETRICO 123/6027  
Original



FRUTTA E GEOMETRICO 123/6028  
Magenta & Ink



FRUTTA E GEOMETRICO 123/6029  
Pastel



FRUTTA E GEOMETRICO 123/6030  
Black & White



FRUTTA E GEOMETRICO 123/6031  
Black, White & Gold

## FRUTTA E GEOMETRICO

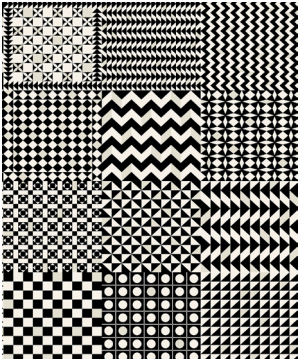
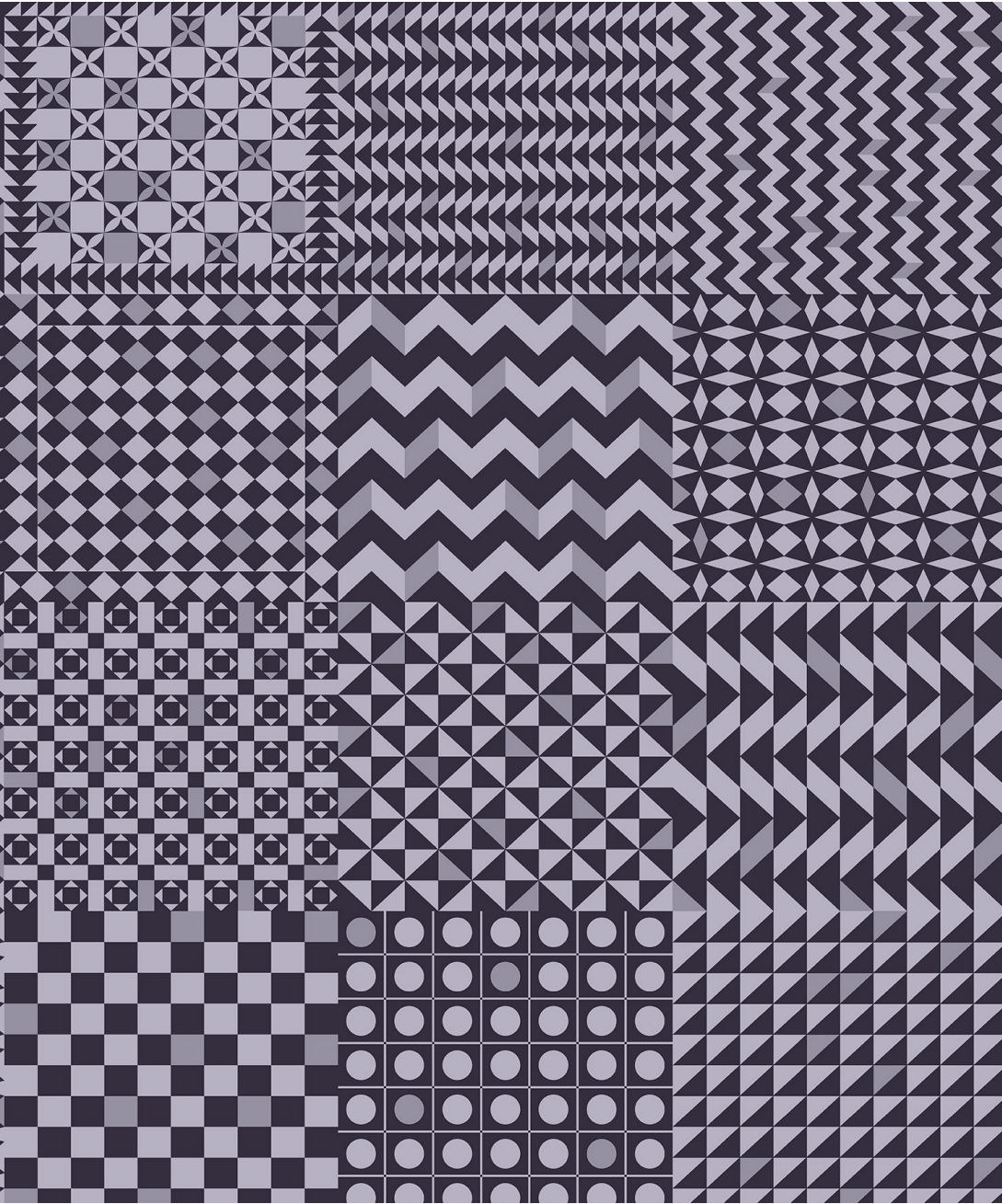
Every single image is a source of inspiration, a starting point that may lead to infinite variations. This is the very principle on which most of Piero Fornasetti's work relies. Fruit has prominently sat amongst his themes and designs since the 1940s and are present on many atelier items.

The clear-cut graphic lines infuse this arresting wallpaper with Fornasetti's unmistakable signature style and timeless allure. *The trompe l'oeil* effect enhances the contrast between the rigorous geometry of the base and the organic shapes of different fruits found in nature.

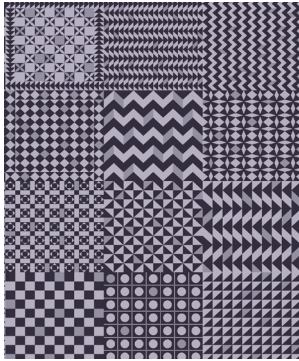
Each of *Frutto e Geometrico*'s colourways provide a variation on this unique combination of structure and organic shape. Choose from chessboard black and white, to the softest mint pastels, or a dusk lilac grey.



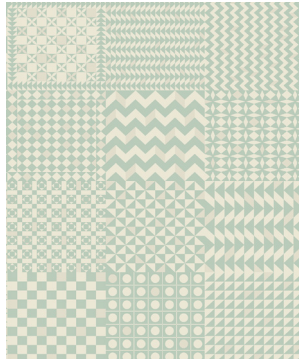
# GEOMETRICO



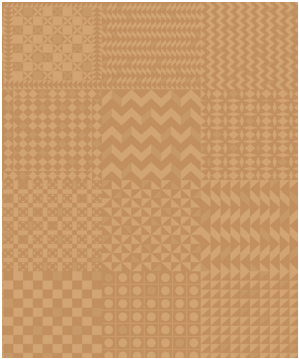
GEOMETRICO 123/7032  
Black & White



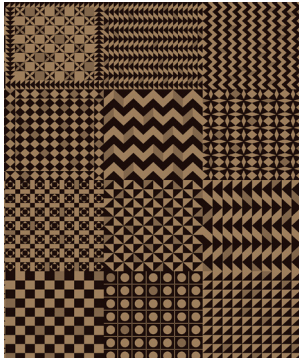
GEOMETRICO 123/7033  
Magenta & Ink



GEOMETRICO 123/7034  
Pastel



GEOMETRICO 123/7035  
Gold on Gold



GEOMETRICO 123/7036  
Black & Gold



GEOMETRICO 123/7037  
Mica

## GEOMETRICO

Piero Fornasetti first used this motif in 1954 for the decoration of his 'Geometrico' screen. Variations on the chessboard theme and perceptual illusions play with the contrast between black and white. A foray into abstract, minimal, contemporary art, without sacrificing the eccentric Fornasetti spirit. Combine with *Frutto e Geometrico* for an extension of the design with added whimsy or use in insolation for a masterclass in bold geometry.



## RAMO DI ORTENSIA



RAMO DI ORTENSIA 123/8038  
Pastel on Charcoal



RAMO DI ORTENSIA 123/8039  
Pastel on Stone



RAMO DI ORTENSIA 123/8040  
Coral on Dark Blue



RAMO DI ORTENSIA 123/8041  
Autumnal



RAMO DI ORTENSIA 123/8042  
Lime & Purple on Ink

## RAMO DI ORTENSIA

The 'Ortensie' design is based upon the abundant hydrangea bushes that grow in the garden that surrounds the Fornasetti house in Milan. Piero Fornasetti created this design in the 50s applying it to numerous tables and trays.

The idea to use hydrangea leaves came to Piero thanks to his son Barnaba. At 3 years old he brought one of the plant's leaves with a small daisy on it from the family garden as a gift for his father. The design captures the lush sprawling trails of this blousy plant and its redolent summer fragrance.

SOLI

SOLI E  
NUVOLEVISTA  
MEDITERRANEATECHNICAL  
SPECIFICATION

CAMMIE

CONCHIGLIE

FRUTTA E  
GEOMETRICO

GEOMETRICO

RAMO DI  
ORTENSIA

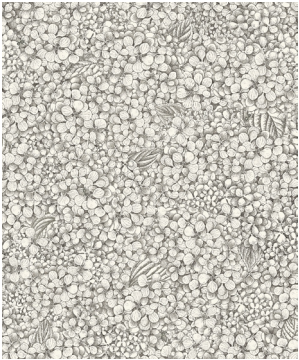
ORTENSIA

FOGLIE E  
SCIMMIEFOGLIE E  
CIVITTEPAGINATION  
SHEET

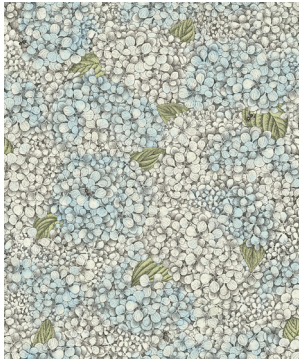
CONTACT US



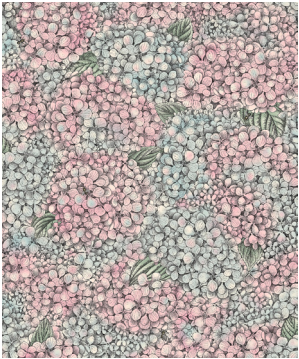
ORTENSIA



ORTENSIA 123/9043  
Black & White



ORTENSIA 123/9044  
Blue & Cream



ORTENSIA 123/9045  
Pink & Blue

ORTENSIA

Stemming from the original 'Ortensie' design, Barnaba Fornasetti created a dense bouquet of petals with bees that at first covered a scarf and furniture of the Atelier. This bounteous floral print is full of life, drawing you into the garden and filling your thoughts with the sweet smells and sounds of summer. Soft pastels are reminiscent of organic *Ortensia* hues, whilst a simple monochrome accentuates the delicately detailed linework of this expansive design.



# FOGLIE E SCIMMIE



FOGLIE E SCIMMIE 123/10046  
Viridian



FOGLIE E SCIMMIE 123/10047  
Olive & Orange



FOGLIE E SCIMMIE 123/10048  
Blush with Blue Monkey



FOGLIE E SCIMMIE 123/10049  
Forest Green



FOGLIE E SCIMMIE 123/10050  
Autumnal Leaves

## FOGLIE E SCIMMIE

Monkeys appear throughout the Milanese Atelier's work and, for the first time, are available emerging from the dense foliage of *Chiavi Segrete*. The playful composition of flora and fauna is quintessential Fornasetti, with the delicate organic study juxtaposed by the hiding primates. Available in subtle tones of old olive, as well as rich autumnal and verdant green palettes, *Foglie e scimmie* is natural progression of many of the Atelier's prolific themes.



# FOGLIE E CIVETTE



FOGLIE E CIVETTE 123/I 1051  
Viridian



FOGLIE E CIVETTE 123/I 1052  
White



FOGLIE E CIVETTE 123/I 1053  
Midnight



FOGLIE E CIVETTE 123/I 1054  
Forest Green





FOGLIE E CIVETTE 123/I 1055  
Autumnal Leaves

## FOGLIE E CIVETTE

The owl, forever associated with darkness and gloom, can see and move deftly in the dark, hence its symbolism as the embodiment of wisdom and foresight. This ambivalent and mysterious symbol fascinated Piero Fornasetti, who used it as a motif on numerous accessories and porcelain items.



The animal kingdom has long populated Fornasetti's imagination and enriches this wallpaper with watchful owls nestled amongst a thick mantle of *Chiavi Segrete* leaves in tones of rich sapphire and citrine, as well as the softer stone and spring-like leaf greens.



DESIGN NAME	PRODUCT CODE	COLOUR DESCRIPTION	WIDTH (CM)	WIDTH (INS)	ROLL LENGTH (M)	ROLL LENGTH (YDS)	REPEAT (CM)	REPEAT (INS)	ROLL (SQM)	ROLL (SQF)	MATCH	LIGHT FASTNESS & WASHABILITY	EAN CODE
SOLI	123/1001	BLACK & WHITE	52	20.5	10	11	52	20.5	5.2	56	THIRD DROP	 	5055496034065
	123/1002	CREAM & GOLD											5055496034072
	123/1003	SAGE & ROSE GOLD											5055496034089
	123/1004	MIDNIGHT & SOFT GOLD											5055496034096
	123/1005	EMERALD & GOLD											5055496034102
SOLI E NUVOLE	123/2006	YELLOW & BLUE	52	20.5	10	11	76	29.9	5.2	56	HALF DROP		5055496034119
	123/2007	BLACK & WHITE											5055496034126
	123/2008	GOLD & SILVER ON CHARCOAL											5055496034133
	123/2009	BEIGE & SOFT GOLD											5055496034140
	123/2010	TEAL & ROSE GOLD											5055496034157
	123/2011	GOLD ON GOLD											5055496034164
VISTA MEDITERRANEA	123/3012	CHARCOAL SKY	140	55.1	3.5	3.8	3.5	137.7	4.9	52.7	STRAIGHT MATCH		5055496034171
	123/3013	MIDNIGHT WITH SILVER SUN										5055496034188	
	123/3014	BLUE OMBRE SKY										5055496034195	
	123/3015	SOFT NEUTRAL										5055496034201	
CAMMEI	123/4016	ANTIQUE GOLD ON OLIVE	52	20.5	10	11	76	29.9	5.2	56	STRAIGHT MATCH	5055496034218	
	123/4017	SILVER ON INK										5055496034225	
	123/4018	GOLD ON CHARCOAL										5055496034232	
	123/4019	SOFT GOLD ON STONE										5055496034249	
	123/4020	SLATE & ROSE GOLD										5055496034256	
	123/4021	BLACK & WHITE										5055496034263	





PAGINATION SHEET

DESIGN NAME	PRODUCT CODE	COLOUR DESCRIPTION	WIDTH (CM)	WIDTH (INS)	ROLL LENGTH (M)	ROLL LENGTH (YDS)	REPEAT (CM)	REPEAT (INS)	ROLL (SQM)	ROLL (SQF)	MATCH	LIGHT FASTNESS & WASHABILITY	EAN CODE
CONCHIGLIE	I23/5022	GILVER ON DENIM	68.5	27	10	11	68.5	27	6.85	73.7	STRAIGHT MATCH	 	5055496034270
	I23/5023	SOFT GOLD ON CHARCOAL											5055496034287
	I23/5024	PEARL ON PARCHMENT											5055496034294
	I23/5025	GOLD ON STONE											5055496034300
	I23/5026	ANTIQUE GOLD ON IVY											5055496034317
FRUTTA E GEOMETRICO	I23/6027	ORIGINAL	52	20.5	10	11	64	25.2	5.2	56	HALF DROP		5055496034324
	I23/6028	MAGENTA & INK											5055496034331
	I23/6029	PASTEL											5055496034348
	I23/6030	BLACK & WHITE											5055496034355
	I23/6031	BLACK,WHITE & GOLD											5055496034362
GEOMETRICO	I23/7032	BLACK & WHITE	52	20.5	10	11	64	25.2	5.2	56	HALF DROP		5055496034379
	I23/7033	MAGENTA & INK											5055496034386
	I23/7034	PASTEL											5055496034393
	I23/7035	GOLD ON GOLD											5055496034409
	I23/7036	BLACK & GOLD											5055496034416
	I23/7037	MICA										5055496034423	
RAMO DI ORTENSIA	I23/8038	PASTEL ON CHARCOAL	52	20.5	10	11	64	25.2	5.2	56	HALF DROP	5055496034430	
	I23/8039	PASTEL ON STONE										5055496034447	
	I23/8040	CORAL ON DARK BLUE										5055496034454	
	I23/8041	AUTUMNAL										5055496034461	
	I23/8042	LIME & PURPLE ON INK										5055496034478	



PAGINATION SHEET

DESIGN NAME	PRODUCT CODE	COLOUR DESCRIPTION	WIDTH (CM)	WIDTH (INS)	ROLL LENGTH (M)	ROLL LENGTH (YDS)	REPEAT (CM)	REPEAT (INS)	ROLL (SQM)	ROLL (SQF)	MATCH	LIGHT FASTNESS & WASHABILITY	EAN CODE
ORTENSIA	I23/9043	BLACK & WHITE	52	20.5	10	11	64	25.2	5.2	56	HALF DROP	<div><div></div><div></div></div>	5055496034485
	I23/9044	BLUE & CREAM											5055496034492
	I23/9045	PINK & BLUE											5055496034508
FOGLIE E SCIMMIE	I23/10046	VIRIDIAN	68.5	27	10	11	57	22.4	6.85	73.7	STRAIGHT MATCH		5055496034515
	I23/10047	OLIVE & ORANGE											5055496034522
	I23/10048	BLUSH WITH BLUE MONKEY											5055496034539
	I23/10049	FOREST GREEN											5055496034546
	I23/10050	AUTUMNAL LEAVES											5055496034553
FOGLIE E CIVETTE	I23/11051	VIRIDIAN	68.5	27	10	11	57	22.4	6.85	73.7	STRAIGHT MATCH		5055496034560
	I23/11052	WHITE										5055496034577	
	I23/11053	MIDNIGHT										5055496034584	
	I23/11054	FOREST GREEN										5055496034591	
	I23/11055	AUTUMNAL LEAVES										5055496034607	

FORNASETTI  
SENZA TEMPO II

SOLI

SOLI E  
NUVOLE

VISTA  
MEDITERRANEA

TECHNICAL  
SPECIFICATION

CAMMEI

CONCHIGLIE

FRUTTA E  
GEOMETRICO

GEOMETRICO

RAMO DI  
ORTENSIA

ORTENSIA

FOGLIE E  
SCIMMIE

FOGLIE E  
CIVITTE

PAGINATION  
SHEET

CONTACT US



# CONTACT US

## FORNASETTI

Corso Venezia 21A - Milan, Italy

EMAIL: [trade@fornasetti.com](mailto:trade@fornasetti.com)

Visit us at:

[W fornasetti.com](https://www.fornasetti.com)

[@fornasetti](https://www.instagram.com/fornasetti)



FORNASETTI  
SENZA TEMPO II

SOLI

SOLI E  
NUVOLE

VISTA  
MEDITERRANEA

TECHNICAL  
SPECIFICATION

CAMMEI

CONCHIGLIE

FRUTTA E  
GEOMETRICO

GEOMETRICO

RAMO DI  
ORTENSIA

ORTENSIA

FOGLIE E  
SCIMMIE

FOGLIE E  
CIVITTE

PAGINATION  
SHEET

CONTACT US